



15 Holland Hill

Every Home, Every Detail

Two-Bedroom

Three-Bedroom

Four-Bedroom

- A

Arrival Pavilion
- B

Garden Concierge
- C

Gym
- D

Secret Garden
- E

Swimming Pool
- F

Pool Pavilion
- G

Children's Playground
- H

Yoga Pavilion
- I

The Vale
- J

The Knolls
- K

The Blooms
- L

Clubhouse
- M

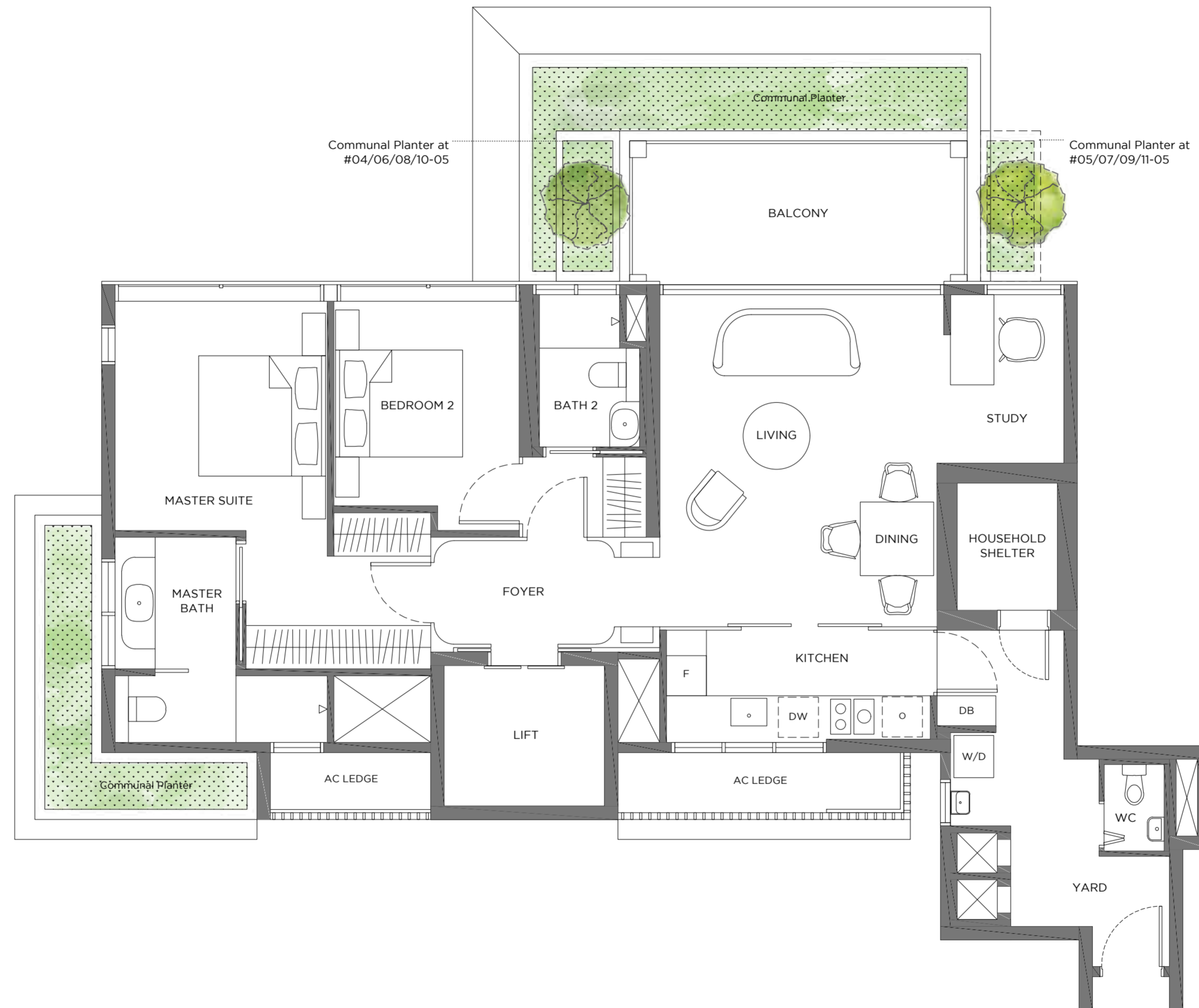
Guardhouse
- 1

Generator (Lower ground)
- 2

Bin Centre (Lower ground)
- Water Tank (Roof)

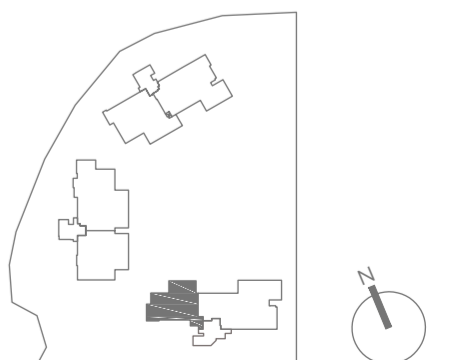


Tower 1
 2-Bedroom + Study
 Type 2BR+S
 120 sqm / 1,292 sqft
 Unit #04-05 to #11-05



0 1 5M

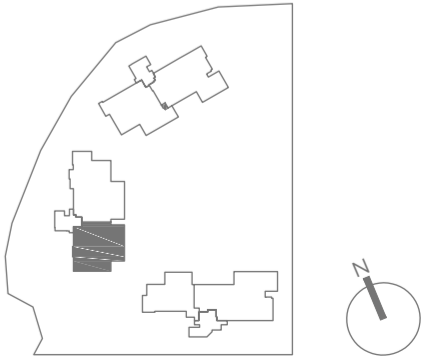
Plans are subject to change/amendments as may be required and/or approved by the Developer and/or the relevant authorities and do not form part of any offer or contract.



Tower 2
3-Bedroom
Type 3BR-a
167 sqm / 1,798 sqft
Unit #03-04 to 11-04



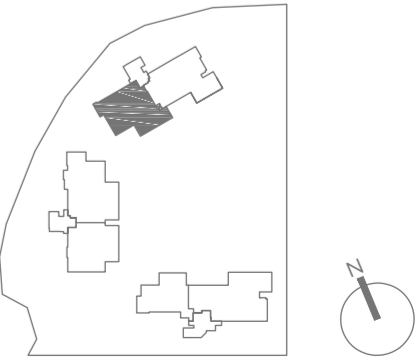
Plans are subject to change/amendments as may be required and/or approved by the Developer and/or the relevant authorities and do not form part of any offer or contract.



Tower 3
3-Bedroom
Type 3BR-b
173 sqm / 1,862 sqft
Unit #04-02 to 11-02



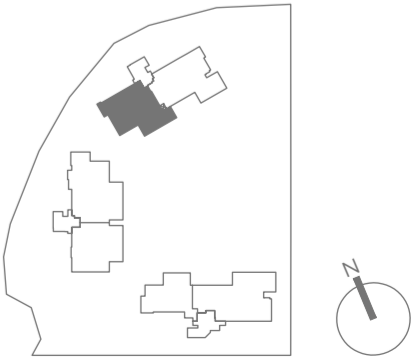
Plans are subject to change/amendments as may be required and/or approved by the Developer and/or the relevant authorities and do not form part of any offer or contract.



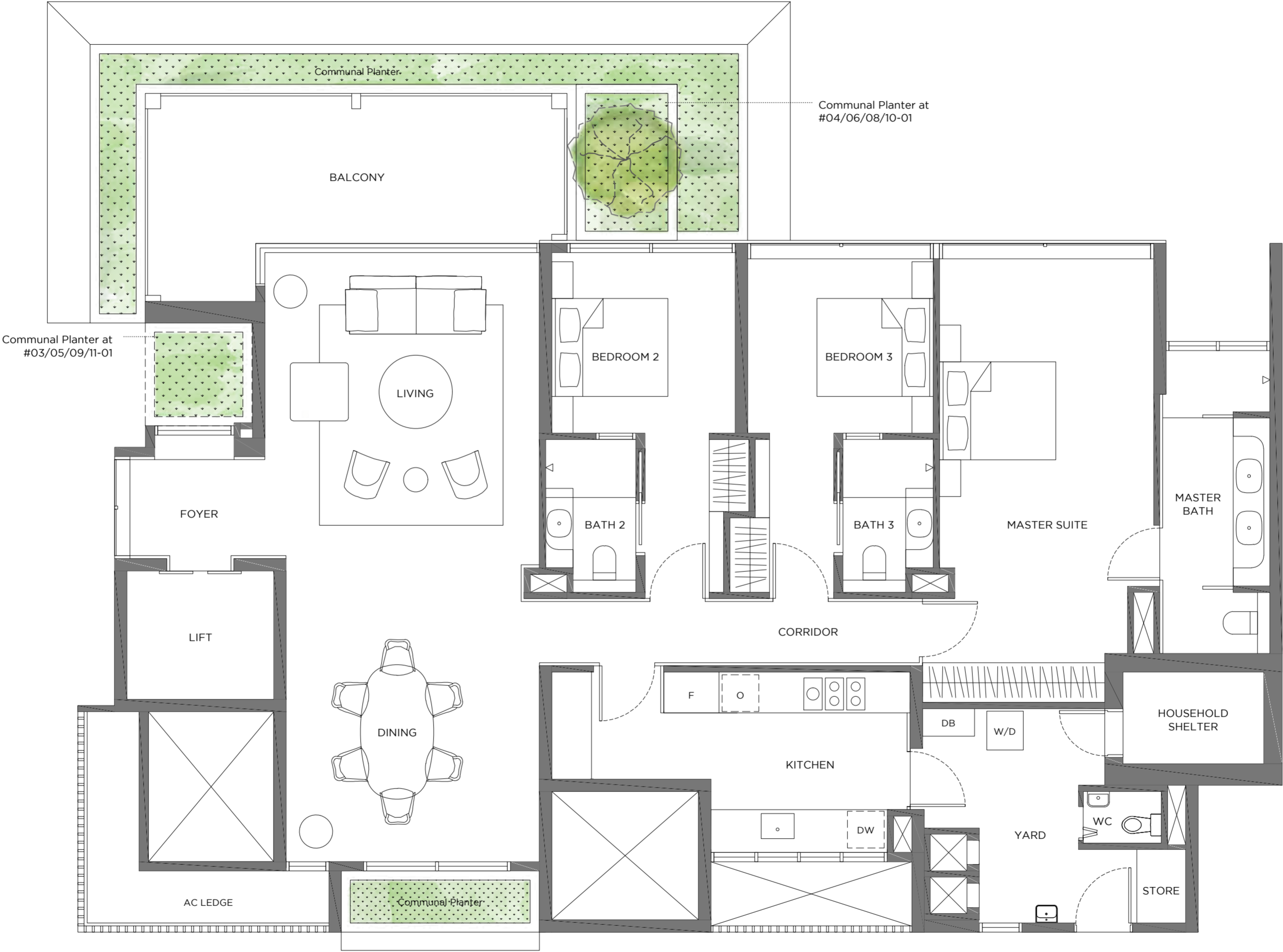
Tower 3
3-Bedroom
Type 3BR-b1
173 sqm / 1,862 sqft
Unit #03-02



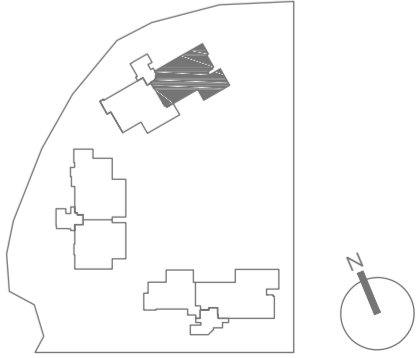
Plans are subject to change/amendments as may be required and/or approved by the Developer and/or the relevant authorities and do not form part of any offer or contract.



Tower 3
3-Bedroom
Type 3BR-c
190 sqm / 2045 sqft
Unit #03-01 to 11-01



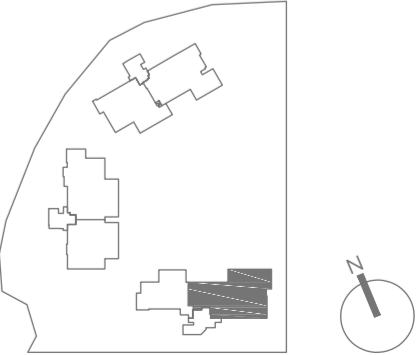
Plans are subject to change/amendments as may be required and/or approved by the Developer and/or the relevant authorities and do not form part of any offer or contract.



Tower 1
4-Bedroom
Type 4BR-a
232 sqm / 2,497 sqft
Unit #04-06 to 11-06



Plans are subject to change/amendments as may be required and/or approved by the Developer and/or the relevant authorities and do not form part of any offer or contract.

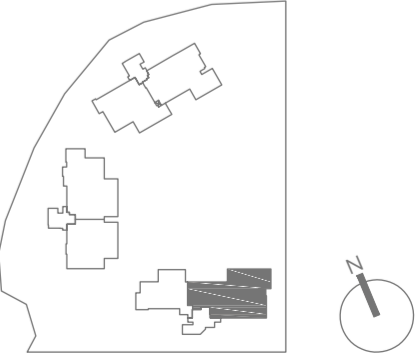


Tower 1
4-Bedroom
Type 4BR-a1
232 sqm / 2,497 sqft
Unit #03-06



0 1 5M

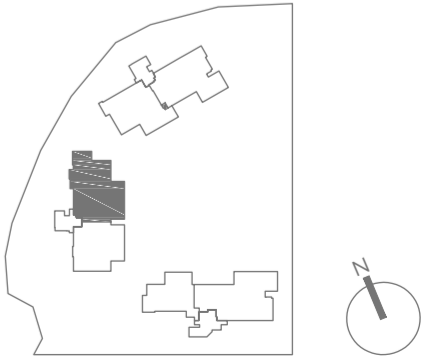
Plans are subject to change/amendments as may be required and/or approved by the Developer and/or the relevant authorities and do not form part of any offer or contract.



Tower 2
4 Bedroom
Type 4BR-b
214 sqm / 2,303 sqft
Unit #03-03 to 11-03



Plans are subject to change/amendments as may be required and/or approved by the Developer and/or the relevant authorities and do not form part of any offer or contract.



DEVELOPED BY



PROJECT INFORMATION
Developer: Peak Opal Pte. Ltd. (Co. Registration No. 201526034W)
Developer's License No.: C1320
Tenure: Freehold
Expected Date of Vacant Possession: 31 May 2024
Expected Date of Legal Completion: 31 May 2027
Lot No.: 02518X MK02
Encumbrance: Mortgage registered in favour of United Overseas Bank and DBS Bank

DISCLAIMER
Please note that illustrations, art renderings, layout and other graphic representations of the floor plan herein contained with furniture and other interior design are intended to portray only artistic impressions of the floor area and layout of the units and cannot be regarded as representation of fact. Floor areas are approximate measurements and subject to final survey. The Sale and Purchase Agreement shall form the entire agreement between us, the Developer and the Purchaser.

