

TYPE A1

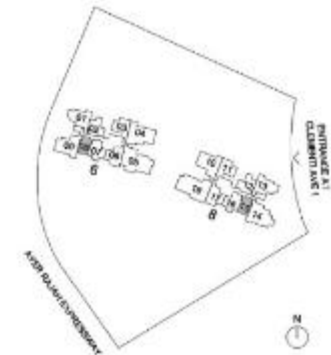
Area: 49sqm (527sqft)
Unit(s): #02-08 to #37-08

*Mirror
#02-15 to #37-15

1 Bedroom + Study



Areas include AC ledge and balcony, where applicable. The plans are subjected to change as may be required by relevant authorities. All areas and measurements stated herein as approximate and subject to final survey.



TYPE B1

Area: 63sqm (678sqft)
Unit(s): #02-02 to #36-02

*Mirror
#02-12 to #36-12

2 Bedroom Compact



Areas include AC ledge and balcony, where applicable. The plans are subjected to change as may be required by relevant authorities. All areas and measurements stated herein as approximate and subject to final survey.

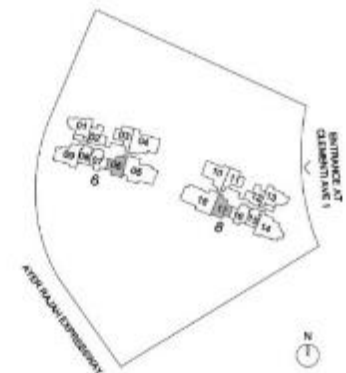


TYPE BP1

Area: 71sqm (764sqft)
Unit(s): #02-06 to #37-06

*Mirror
#02-17 to #37-17

2 Bedroom Premium



0 1 2 3 4 5M

Areas include AC ledge and balcony, where applicable. The plans are subjected to change as may be required by relevant authorities. All areas and measurements stated herein as approximate and subject to final survey.

TYPE BP2

Area: 71sqm (764sqft)
Unit(s): #02-03 to #36-03

*Mirror
#02-11 to #36-11

2 Bedroom Premium



0 1 2 3 4 5M

Areas include AC ledge and balcony, where applicable. The plans are subjected to change as may be required by relevant authorities. All areas and measurements stated herein as approximate and subject to final survey.



TYPE BP3

Area: 71sqm (764sqft)
Unit(s): #02-07 to #37-07

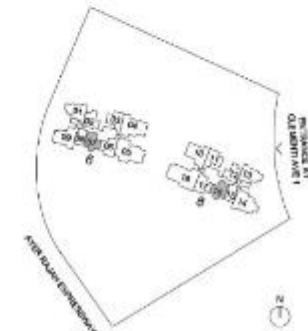
*Mirror
#02-16 to #36-16

2 Bedroom Premium



0 1 2 3 4 5M

Areas include AC ledge and balcony, where applicable. The plans are subjected to change as may be required by relevant authorities. All areas and measurements stated herein as approximate and subject to final survey.



TYPE C1

Area: 89sqm (958sqft)
Unit(s): #02-01 to #36-01

*Mirror
#02-13 to #36-13

3 Bedroom Compact



Areas include AC ledge and balcony, where applicable. The plans are subjected to change as may be required by relevant authorities. All areas and measurements stated herein as approximate and subject to final survey.



TYPE CP1

Area: 105sqm (1130sqft)
Unit(s): #02-09 to #37-09

3 Bedroom Premium



Areas include AC ledge and balcony, where applicable. The plans are subjected to change as may be required by relevant authorities. All areas and measurements stated herein as approximate and subject to final survey.



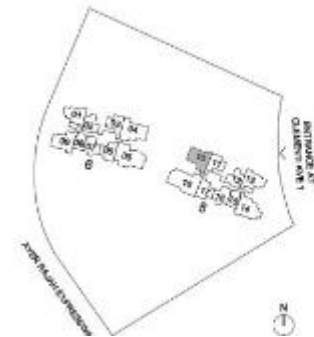
TYPE CP2

Area: 105sqm (1130sqft)
Unit(s): #02-10 to #36-10

3 Bedroom Premium



Areas include AC ledge and balcony, where applicable. The plans are subjected to change as may be required by relevant authorities. All areas and measurements stated herein as approximate and subject to final survey.



TYPE D1

Area: 119sqm (1281sqft)
Unit(s): #02-14 to #37-14

4 Bedroom



Areas include AC ledge and balcony, where applicable. The plans are subjected to change as may be required by relevant authorities. All areas and measurements stated herein as approximate and subject to final survey.



TYPE D2

Area: 126sqm (1356sqft)
Unit(s): #02-04 to #36-04

4 Bedroom + Study



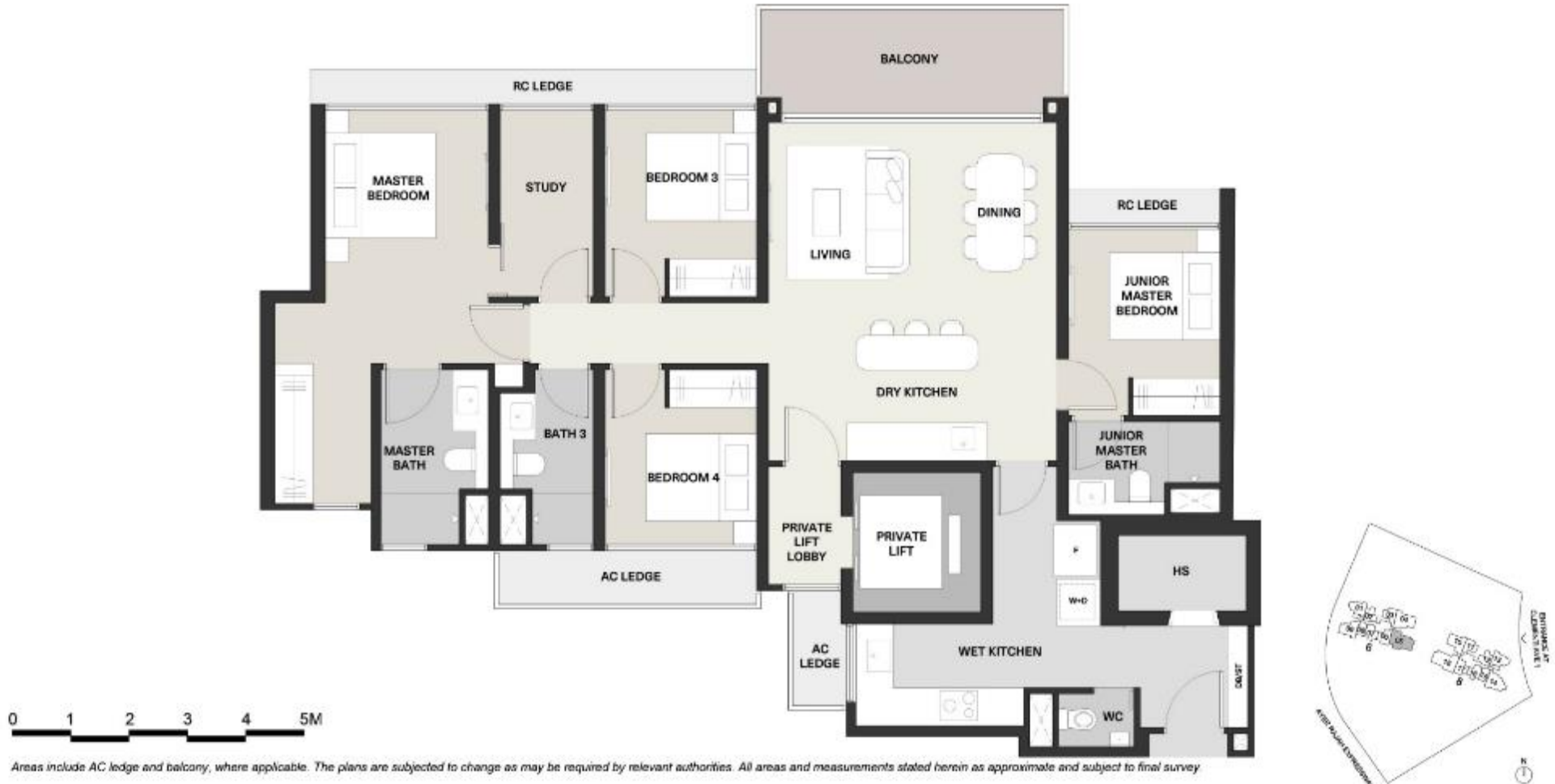
0 1 2 3 4 5M

Areas include AC ledge and balcony, where applicable. The plans are subjected to change as may be required by relevant authorities. All areas and measurements stated herein as approximate and subject to final survey.

TYPE DP1

Area: 147sqm (1582sqft)
Unit(s): #02-05 to #37-05

4 Bedroom Premium



Areas include AC ledge and balcony, where applicable. The plans are subjected to change as may be required by relevant authorities. All areas and measurements stated herein as approximate and subject to final survey

TYPE E1

Area: 157sqm (1690sqft)
Unit(s): #02-18 to #37-18

5 Bedroom Premium



Areas include AC ledge and balcony, where applicable. The plans are subjected to change as may be required by relevant authorities. All areas and measurements stated herein as approximate and subject to final survey.