

ONE TREE HILL

COLLECTION

ONE TREE HILL

An address that has defined **exclusivity for generations**. A **new freehold collection** that sits at the crossroads of simplicity and elegance. A lifestyle that brings together an appreciation for craftsmanship with the luxury of modern living. An exclusive home to create a genesis of your legacy. Welcome to **One Tree Hill Collection**.





FREEHOLD

Your successes are your own, yet also a part of a much greater tapestry. Your choices will transcend your own lifetime. As a freehold collection, this location is your home, your connection between the present and the future. A bond shared between you and the generations to come.

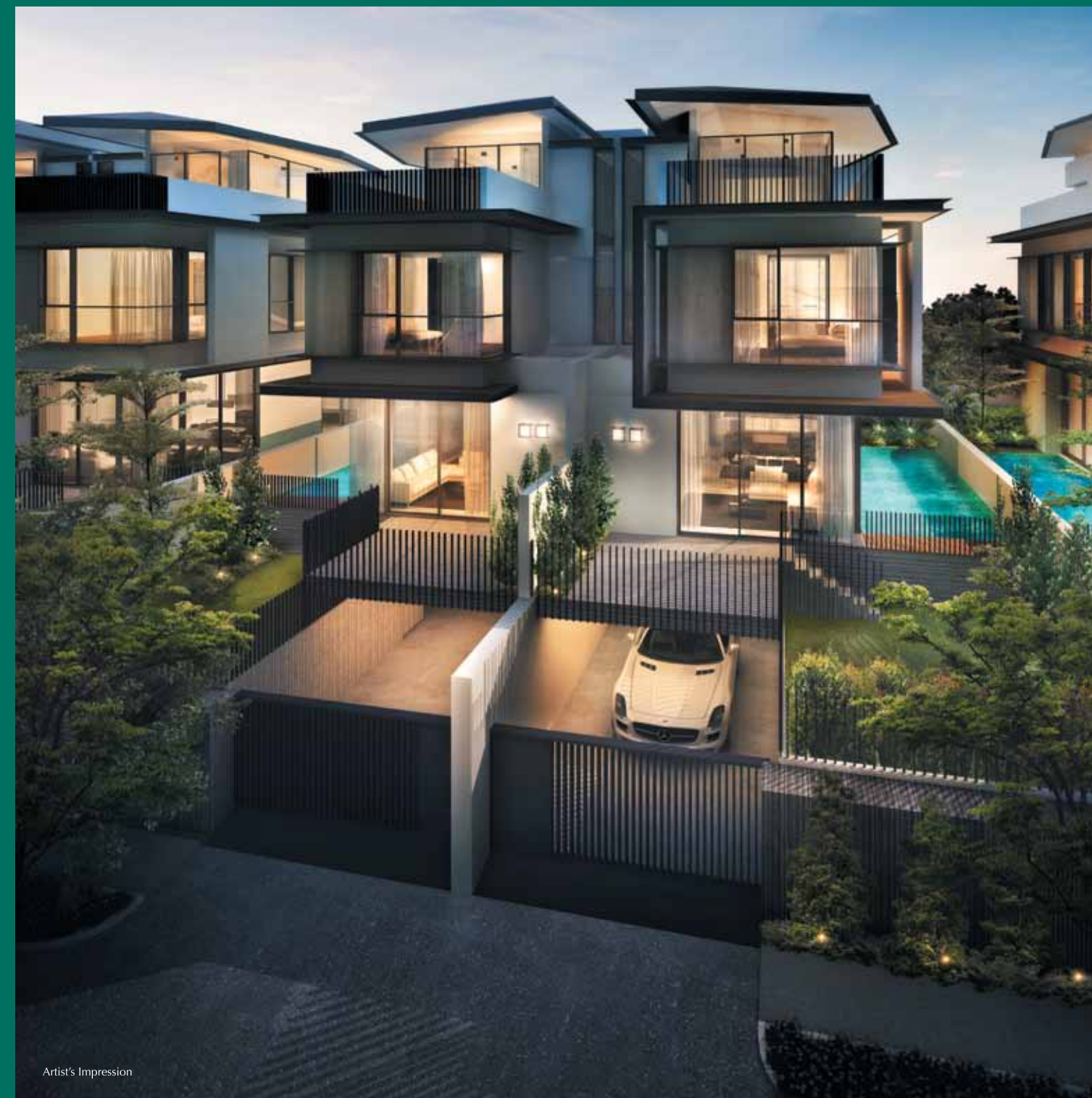
Shape your legacy.

A LEGACY THAT ENDURES



AN ADDRESS OF DISTINCTION

One Tree Hill's beginnings were already intertwined with success. Owned by British trading house Guthrie & Company in the 19th century, the area was named after one outstanding rubber tree that grew head and shoulders above the rest – as if to herald its reputation as the neighbourhood for exceptional individuals, families and homes.





EXCLUSIVITY HAS FOUND ITS HOME

CREATED ONLY FOR THE DISCERNING

Designed for the finest of sensibilities by award-winning architectural firm K2LD, these 12 semi-detached and 2 bungalow homes form a haven for those who appreciate privacy and craftsmanship. With modern conveniences at your fingertips, and central business and retail districts minutes away, **One Tree Hill Collection** is in a truly timeless location.





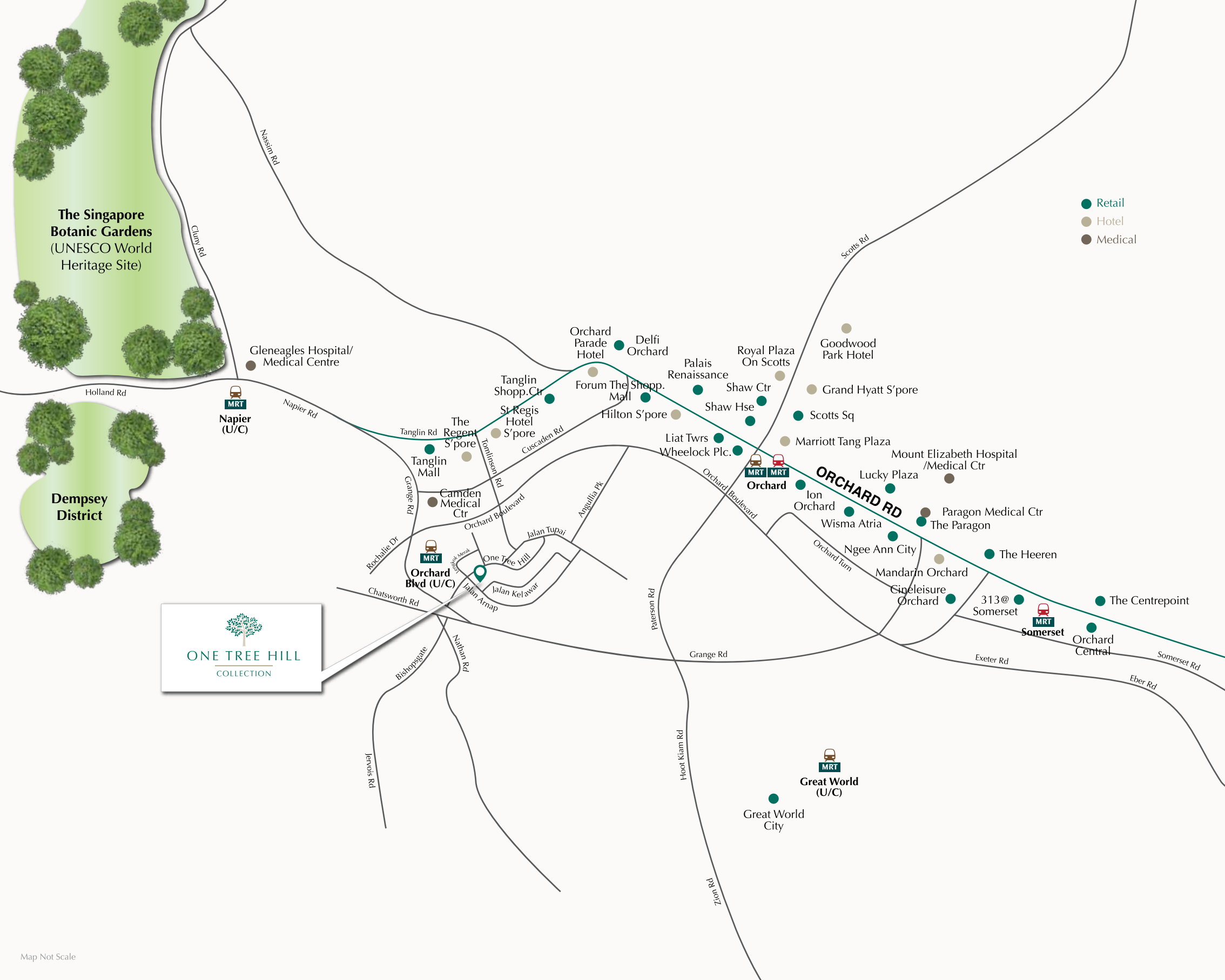
“Craftsmanship and materials are of great importance. Luxurious features and conveniences should be integrated in a way that feels organic, reflecting a sense of place and a promise to withstand the test of time, bringing these houses to contemporary standards of comfort and efficiency.”

- Ben Teng, K2LD Architects



K2LD ARCHITECTS

K2LD embraces the sense and sensibility of architecture – moulding the intricate relationship between time, light and material to allow spatial freedom that is beautiful in its myriad expressions, and creating the highest quality design that responds to the environment and the client’s aspirations. Some of K2LD’s accolades include the Design Excellence Award, the SIA Architectural Design Award and Singapore Design Award.



AT THE HEART OF IT ALL

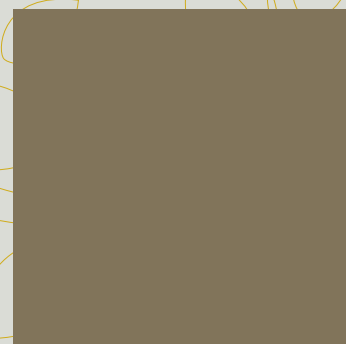
Minutes away from town, yet nestled within a private enclave of affluent residential areas, this location is ideal for upscale living.



EASE OF REACH

Luxury retail in Orchard Road sits just beyond your doorstep, providing you not just with a home that is situated for your every convenience – but an **inspiration for the generations**.

Jewels, watches, gems – any item can be part of a heritage, be filled with meaning, as long as it comes from the heart. What greater meaning is there than to have it so closely associated with home?



From former army barracks to upscale eateries, Dempsey shows that legacies can be about evolution. Indulge in a world of gastronomic delights and fine cuisines that are sure to stimulate even the most discerning of palates.



Find a tranquil refuge in the Singapore Botanic Gardens. Take a walk through all of its lush greenery to appreciate the timeless beauty of nature, providing you with a sense of perspective and a greater understanding of what you create and leave behind as part of your legacy.

Taste the riches that life has to offer, enjoy them to the fullest. Instil these values and desires into your future, and ensure that the generations to come would never take them for granted.





PEOPLE MAKE A HOME

Because of its location in the heart of Singapore, One Tree Hill Collection offers you tranquility and a sense of privacy to treasure what is truly important and find your own balance in life.

Be close to those who matter the most. Embrace the simple joys of quality time while you dine in. Create memories by connecting with your own sense of childhood wonder. Live your life and embrace your legacy.





YOUR TIMELESS SPACE

An enduring and endearing home designed by celebrity interior designer Peter Tay. Every residence comes with everything you could want for such exclusive living. Your comfort is attended to – your legacy is all you have to concern yourself with.



Artist's Impression



“Your home is an extension of you. The space and how you use it tells the world what you already know about yourself. My vision for this collection is not to tell you who you are – but provide you with the canvas to paint that picture.”

- Peter Tay, Celebrity Interior Designer



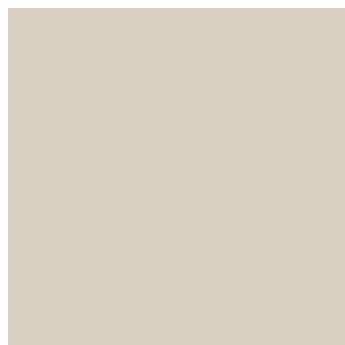
PETER TAY

Having worked with celebrities such as Zhang Ziyi, Wang Leehom, Stephanie Sun and Zoe Tay, Peter Tay is best known for his sleek, yet luxurious style. His work on high-profile residential and commercial projects perfectly walk the line between the contemporary and the timeless. Peter Tay won the Designer of the Year award at the President’s Design Awards 2014.



A STRONG FOUNDATION FOR YOUR LEGACY

The details may change over time, but what will stay the same will always be the foundations upon which you've built your home. Your legacy is not just a place, but the memories that shall live within its walls.



Artist's Impression



Artist's Impression



CURATED LIVING SPACES

Combining sleek quality finishes and fittings, together with modern aesthetics, living spaces not only reflect contemporary sensibilities, but also imbue the warmth of the people they embrace. Thoughtful and well planned interior layouts nurture this very cherished intermingling chemistry. Making the home truly unique.



The right finishes create a sense of identity that is in line with the legacy you have cultivated – always forward-thinking, always growing, always looking to the future, not just for yourself, but for those that matter.

hansgrohe
AXOR®

bulthaup

BOSCH
Invented for life

GAGGENAU

GESSI®

Rimadesio

Villeroy & Boch
1748



Artist's Impression

INTELLIGENT HOMES

Make your home at One Tree Hill Collection your one-of-a-kind luxurious living experience. Your smart home system, powered by Habita's intelligent platform, not only understands your needs, but anticipates them.

With the One Tree Hill Collection Mobile App, personalise settings and preferences any way you desire on the intuitive app which allows you control of all aspects of the house remotely – from starting your day as serenely as possible to finding the optimal way to ensure your constant comfort and peace of mind.



SMART DOOR LOCK

Unlock your door with your app from anywhere in the world.



SMART LIGHTING

Control your lighting and set scene controls via the app remotely.



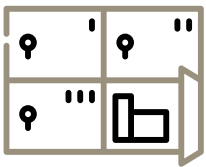
SMART AIRCON CONTROL

Personalise and set your ideal temperature for ultimate comfort, even when you are not at home.



SMART SMOKE DETECTOR

Alerts your smartphone in real time when the smoke detector goes off.



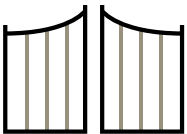
SMART PARCEL BOX

Receive parcels even when not at home. Receive notifications and unlock the parcel box via the app.



SMART INTERCOM

Interact with visitors by video on your smartphone and grant access remotely.



SMART AUTO GATE

Have your home know your arrival and time your autogate to open just as you arrive home by car.



VISITOR MANAGEMENT SYSTEM

Send a personalised e-invitation which also grants your visitors access for unparalleled convenience.



Artist's Impression



A LEGACY BUILT ON ASPIRATIONS

Perseverance, drive, ambition, creativity – all hallmarks of the discerning few who are not only successful, but also understand and appreciate **what it means to be successful**. Immerse in and reflect on your success in a lifestyle nurtured by distinctive features.



SITE PLAN

- SEMI-DETACHED
- BUNGALOWS



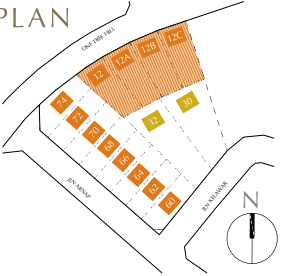
FLOOR PLANS (SEMI-DETACHED)
TYPE: SD1

(12C) Land Area: 274.0 sq m
(12A) Land Area: 273.3 sq m

MIRRORED PLANS

(12B) Land Area: 272.7 sq m
(12) Land Area: 273.6 sq m

KEY PLAN



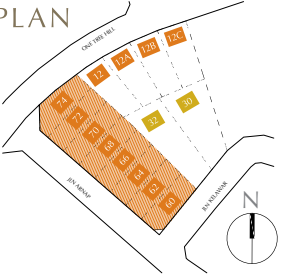
FLOOR PLANS (SEMI-DETACHED)
TYPE: SD2

(74) Land Area: 247.4 sq m
(70) Land Area: 221.8 sq m
(66) Land Area: 216.5 sq m
(62) Land Area: 207.5 sq m

MIRRORED PLANS

(72) Land Area: 223.2 sq m
(68) Land Area: 220.3 sq m
(64) Land Area: 212.0 sq m
(60) Land Area: 217.3 sq m

KEY PLAN



BASEMENT



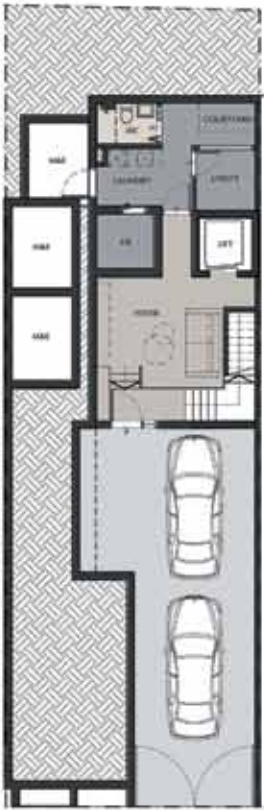
1ST STOREY



2ND STOREY



ATTIC STOREY



BASEMENT



1ST STOREY



2ND STOREY



ATTIC STOREY

Please note that these floor plans are subject to change and should not be relied upon by the purchaser for any purpose other than as a general guide. As such, neither the developer nor its agent(s) will be liable for any claims, losses, cost or expenses of whatever nature that may be suffered by the purchaser's reliance on the said plans, in the event the plans are amended for any reason whatsoever. The purchaser is advised to take on site measurement(s) of the unit before committing to any renovation work(s) or installation or purchase of any fixtures, fittings or furnishings whatsoever.

Please note that these floor plans are subject to change and should not be relied upon by the purchaser for any purpose other than as a general guide. As such, neither the developer nor its agent(s) will be liable for any claims, losses, cost or expenses of whatever nature that may be suffered by the purchaser's reliance on the said plans, in the event the plans are amended for any reason whatsoever. The purchaser is advised to take on site measurement(s) of the unit before committing to any renovation work(s) or installation or purchase of any fixtures, fittings or furnishings whatsoever.

DEVELOPER PROFILE



With a history that goes back to the 1940s, Lum Chang is a developer that understands the importance of a legacy. It may have begun in construction, but since its origins, it has built itself an impressive portfolio that continues to influence its direction into the future – including exclusive addresses in Singapore’s prime residential districts and West Malaysia’s choice residential areas.

To date, Lum Chang has developed more than 2,000 innovatively-designed homes in Singapore and over 1,000 luxury homes in Malaysia. From apartments and condominiums to terrace houses, semi-detached houses and bungalows, Lum Chang demonstrates its commitment to setting itself apart, with locations that are all distinct yet share an inspired vision that would amount to more than just buildings, but also homes.

To see how much they understand that idea of homeliness, look no further than the Good Class Bungalows located on Swettenham Road. To get a sense of their appreciation for timelessness, walk through the halls of the Kuala Lumpur Golf and Country Club (KLGCC).

A legacy that began decades ago has brought Lum Chang’s investment properties onto the global stage, in countries such as Singapore, Malaysia and the United Kingdom. In less than a hundred years, this is how far the developer has come – with a legacy that will stand the test of time for hundreds more.



THE SWETTENHAM LUXURY BUNGALOWS | SINGAPORE



TWIN PALMS SUNGAI LONG | MALAYSIA



TWIN PALMS KEMENSAH | MALAYSIA



TWIN PALMS | MALAYSIA



CORNWALL | SINGAPORE



BELMONT GARDENS | SINGAPORE



CROWNE PLAZA | SINGAPORE



6 ARDMORE PARK | SINGAPORE

